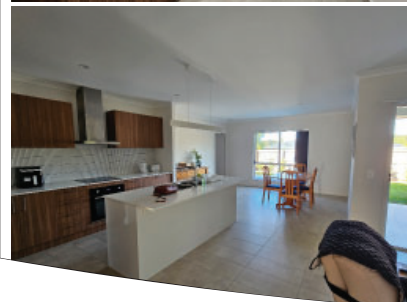
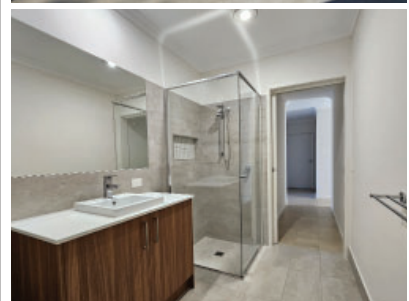


# SIL Accommodation Sippy Downs



2+1 

3 

2 

1 

Near new private 3 bedroom duplex located close to all amenities in the beautiful Sunshine Coast Suburb of Sippy Downs.

Flat entry and wide corridors for easy accessibility. Open plan living with direct access to outdoor patio, garden and pool.

## Experience

Our Operations Manager, Kylie Taylor has a background as a Registered Nurse and is experienced in running disability SIL houses and providing exceptional care.

## Vacancy

Currently occupied by one lovely lady who is looking for her new housemate.



IndeCare

Indecare is a registered NDIS  
Provider. No: 4050084203



• SIL - Supported Independent Living •

Phone: Kylie 0410 306 843

[info@indecare.com.au](mailto:info@indecare.com.au)

# SIL Accommodation Photos



• SIL - Supported Independent Living •

Phone: Kylie 0410 306 843

[info@indecare.com.au](mailto:info@indecare.com.au)

# SIL Accommodation Sippy Downs



• SIL - Supported Independent Living •

Phone: Kylie 0410 306 843

[info@indecare.com.au](mailto:info@indecare.com.au)



IndeCare

Phone: Kylie 0410 306 843

info@indecare.com.au